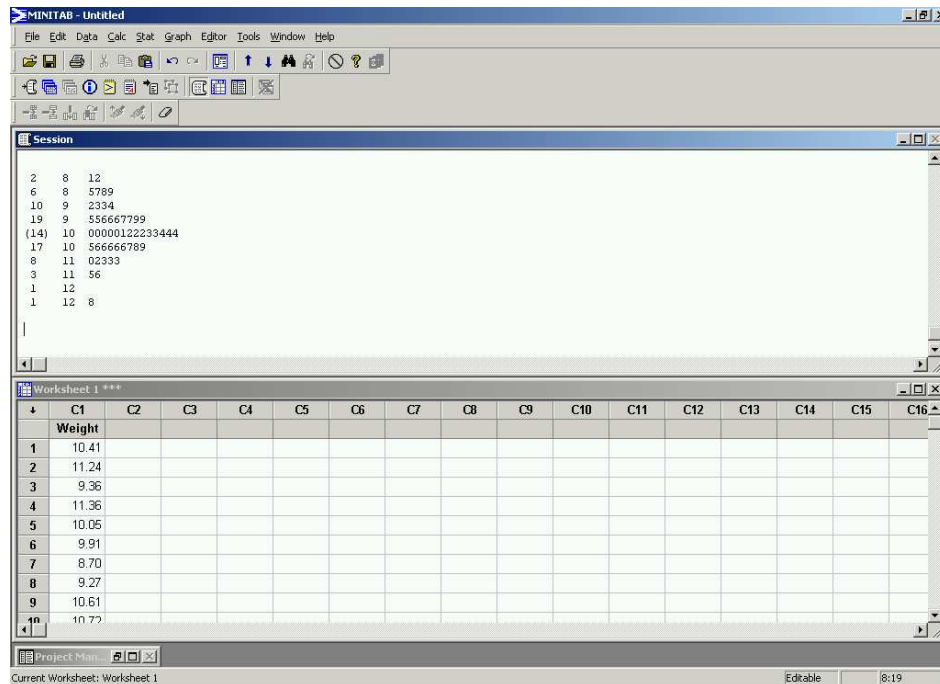


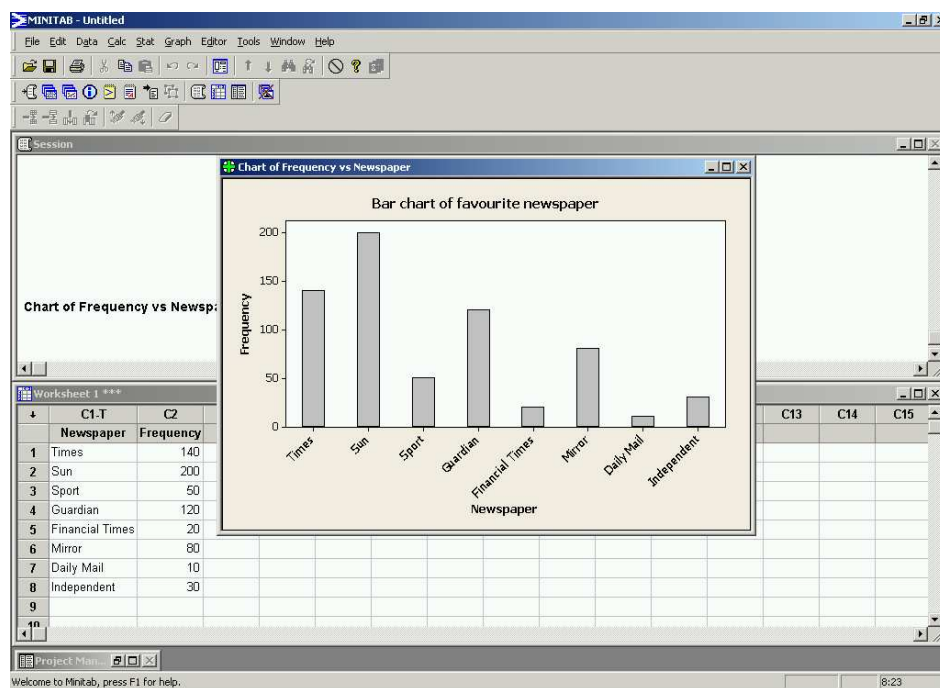
## Solutions to Exercises 2

These solutions comprise screen shots of a data analysis undertaken in Minitab. Notice how the data have been entered into the Minitab worksheet.

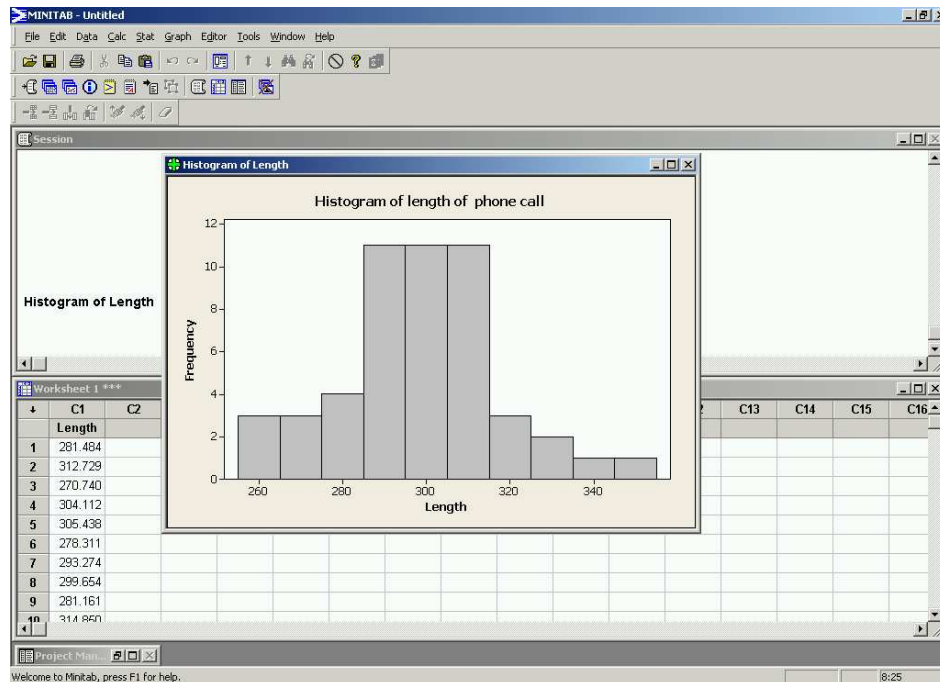
1. The stem and leaf plot is



2. These data are best displayed using a bar chart:



3. The histogram should look like



Using an interval width of 10 seconds gives a reasonable number of intervals – too few intervals if 20 seconds is used for width and too many if 5 seconds is used. Minitab produces a histogram with intervals  $255 \leq \text{time} < 265$ ,  $265 \leq \text{time} < 275$ , ... . However, another perfectly good choice would be  $250 \leq \text{time} < 260$ ,  $260 \leq \text{time} < 270$ , ..., in which case the histogram would look slightly different.