

Running CBAs under RAS

RAS enables you to run your CBA practice and exams from machines outside the campus clusters - all you need is broadband.

To access RAS access the following from your browser.

<https://ras.ncl.ac.uk/citrix/metaframe/default/default.aspx>

The screenshot shows a web browser window titled "MetaFrame Presentation Server - Microsoft Internet Explorer". The address bar displays the URL <https://ras.ncl.ac.uk/citrix/metaframe/default/default.aspx>. The page features the Newcastle University logo and navigation links: Contacts, Directory, Site Map, Maps and Directions, About Us, and Accessibility. A search bar is also present.

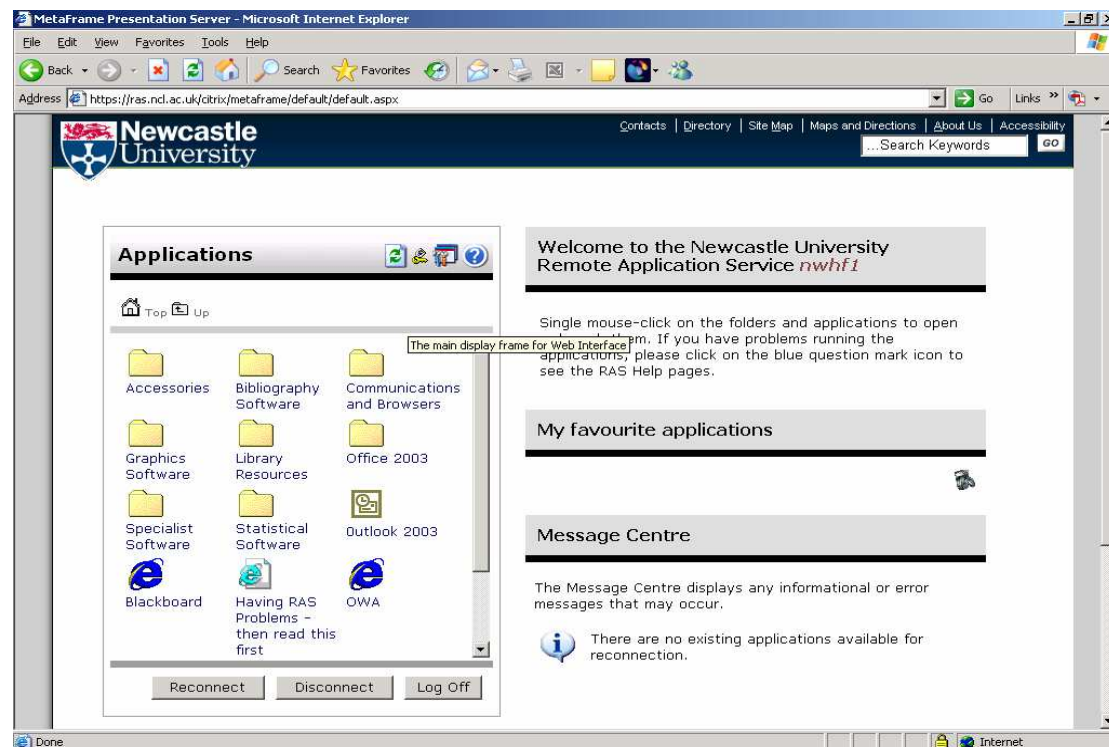
The main content area is divided into three sections:

- Login:** Contains fields for "ISS Windows Logon Name:" and "Password:". Below these is a checkbox for "Enable reconnect at login" (checked) and a dropdown menu for "Disconnected and Active Applications:". A "Log In" button is at the bottom right of this section.
- Welcome to the Newcastle University Remote Application Service:** Includes a link to "Click here to correctly bookmark this page." and instructions: "To use RAS, simply login using your Campus Windows Logon Name and password." It also states: "Check the Message Centre below if this is the first time you have used RAS."
- Message Centre:** States: "The Message Centre displays any informational or error messages that may occur."

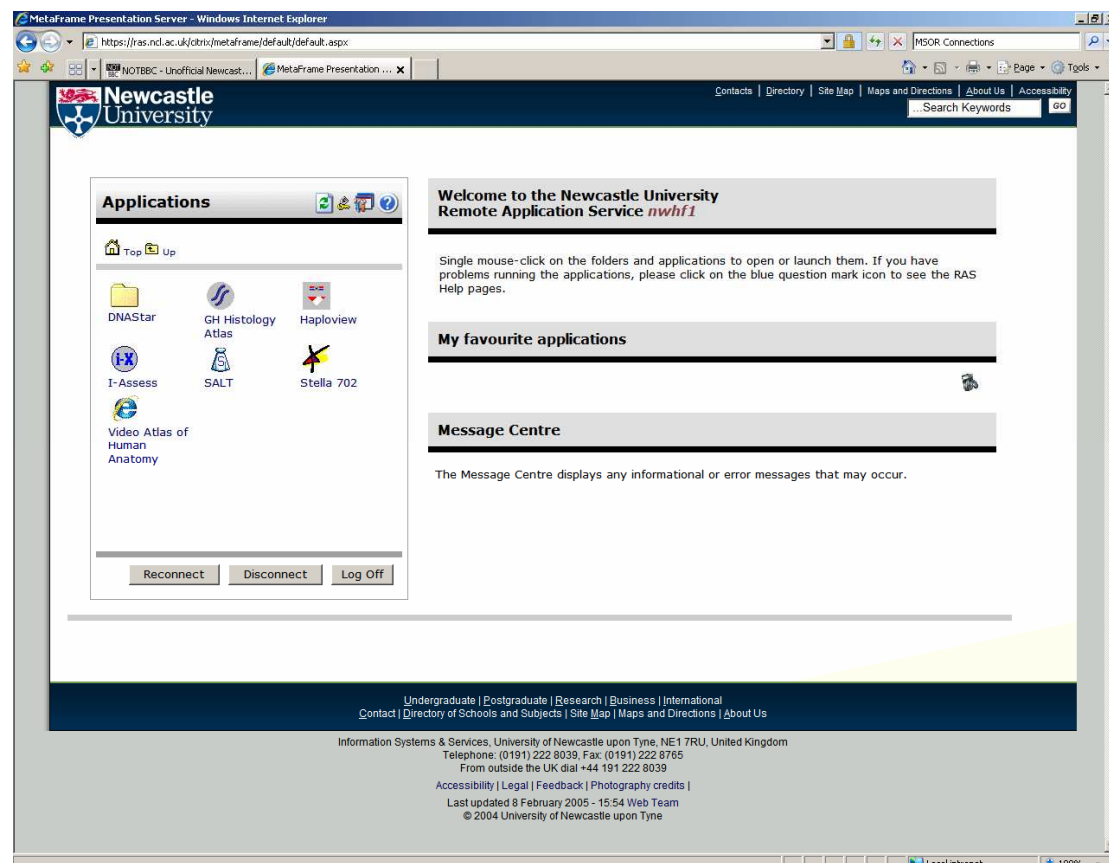
A "Help and Information" section at the bottom left provides additional details: "Information about RAS, including available software can be found at <http://www.ncl.ac.uk/iss/campus/ras>" and "RAS Help and FAQs can be found by clicking on the blue question mark icon above. Check these before contacting the ISS Helpline on 8111 or emailing helpline@ncl.ac.uk for assistance with any RAS problems."

If you are a first time user you will find that you need to follow the instructions in the Message Centre on this screen in order to download some relevant software.

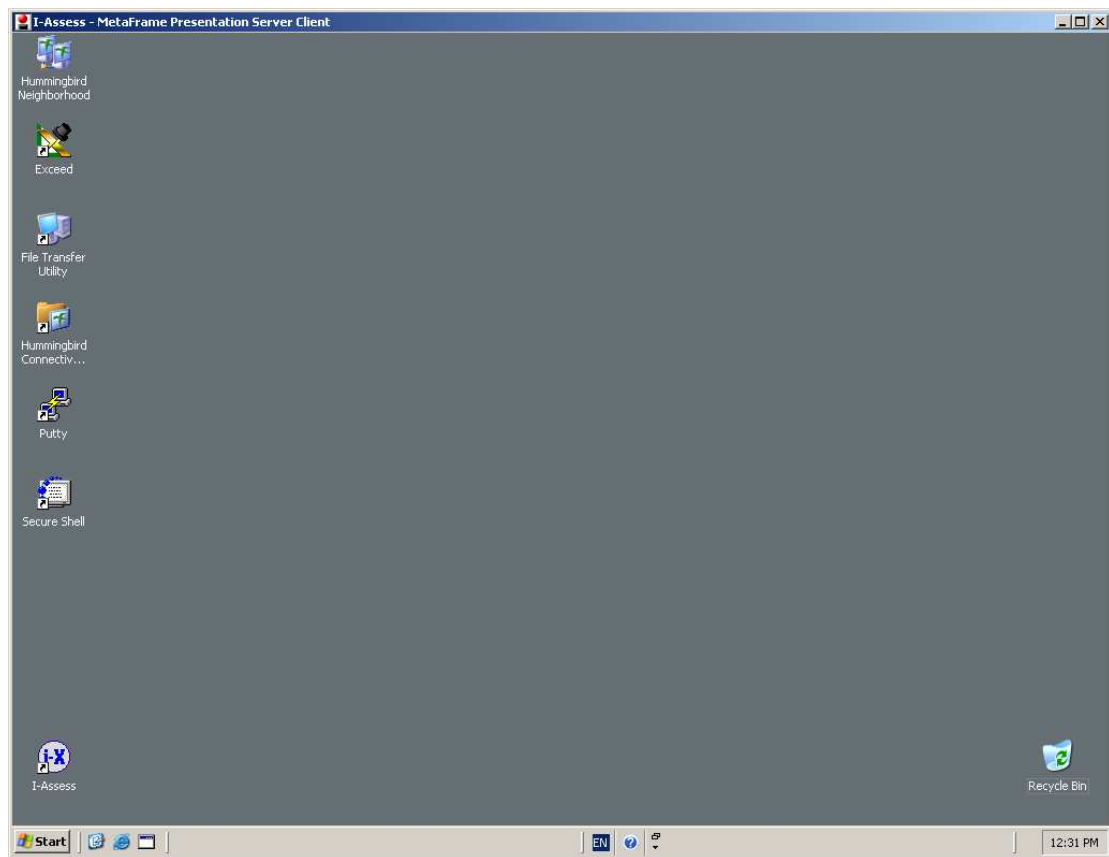
Enter your usual log in as you would at University and you get the following



Now click(once) on Specialist Software and then Departmental Software(once) . You get the following:



Click on I-assess (once) and wait until you get the following:



Double click on I-assess and you are into the assessment program.

When you are finished with the exams and exit in the normal way from the examiner you will be back at the above screen. If you do not want to do any more exams you use Start -> log off (from this window) to return. You can then log off from RAS.

For more information on RAS and what is available look at

<http://www.ncl.ac.uk/iss/campus/ras>